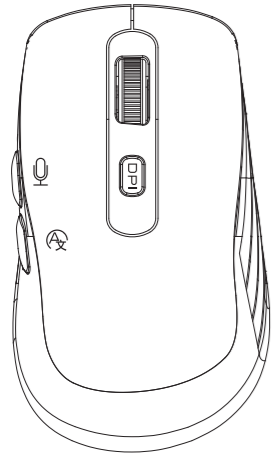


A301

2.4G+BT Switch

无线+BT双模语音鼠标

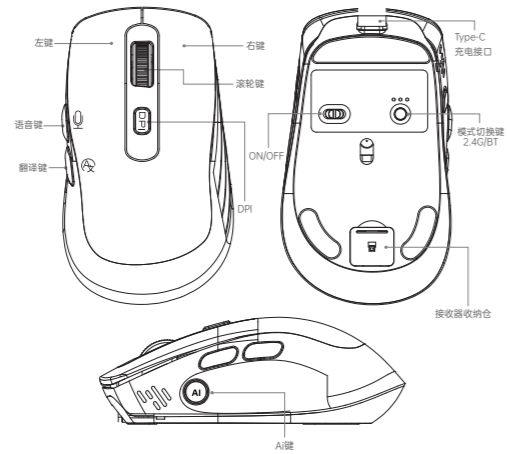
- BT
- BT模式
- 2.4G模式



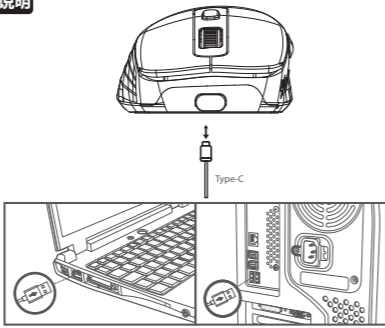
使用说明书

产品功能

- DPI: 1200-1600-2400-3200DPI (默认1200dpi)
- 按键数量: 7个
- 充电电压: 5V
- 充电电流: [最大] 250mA
- 充电口: Type-C
- 电池容量: 500mAh
- 按键寿命: 500万次
- 连接方式: 2.4G+BT
- 重量: 75g ± 5g
- 尺寸: 114.5x66x40mm
- 系统支持: Win XP/Win Vist/Win 7/Win 8/Win 10/Mac



充电说明



将充电线Type-C接口插入鼠标，USB接口连接到您的电脑。即可充电

充电注意事项

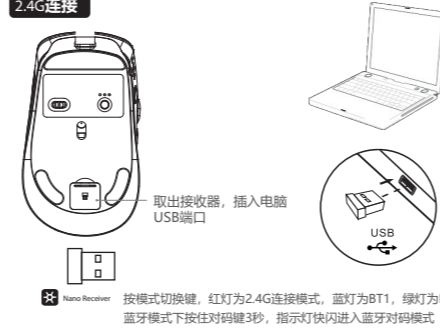
充电说明

- 建议仅使用电脑USB接口对鼠标进行充电;
- 请勿使用快充手机充电器对鼠标充电;
- 请勿使用劣质非标准电源适配器对鼠标进行充电;
- 请勿使用过压过流电源适配器对鼠标进行充电;
- 充电时请远离高温设备;
- 长时间不使用时请关闭电源开关。

以上充电说明同样适用于其他带充电功能设备

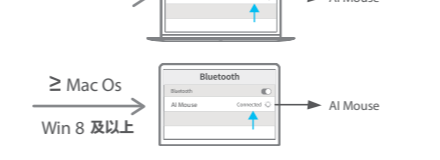
驱动下载地址:
<http://overseas.cocheer.net/aiyc-international/index.html>
 注意:
 下载驱动需在2.4G模式下操作, 按住中键滚轮5秒以上, 自动打开网站,

2.4G连接



取出接收器, 插入电脑USB端口

BT连接



1. 将鼠标底部开关拨至“ON”处, 切换到蓝牙模式
 2. 长按“模式切换键”3秒后指示灯出现快闪, 表示鼠标处于对码状态,
 3. 搜索和选择“AI Mouse”进行连接, 并开始蓝牙配对, 成功后指示灯熄灭, 可正常使用,
 注意: * Windows 7及以下的系统版本可支持 BT3.0, 不支持 BT5.0

保修卡注意事项

尊敬的客户:
 整机自购买日期开始一年内, 针对产品包装内所有的硬件产品, 若出现质量问题, 将为此保修卡用户提供免费维修服务, 其余保修条例按国家《微型计算机商品修理更换退货责任规定》。同时此服务仅限于出现质量问题的产品, 而不包括赔偿购买者利益损失及其他意外情况造成的任何直接或间接损失。

属于下列情况之一的产品, 不实行三包:

- 无有效三包凭证及有效发票的 (能够证明该产品在三包有效期内的除外) 或超过三包有效期的或擅自涂改三包凭证的。
- 三包凭证上的产品型号和编号与产品实物不相符合的。
- 产品上的型号、序列号或生产日期代码已被更改、删除或难以辨认。
- 缺陷是超出预期用途的过度使用造成的, 例如在商业环境中不停地使用。
- 未按产品使用说明的要求使用、维护、保管而造成损坏的。
- 在使用过程中, 使用盗版软件或计算机病毒造成的损坏。
- 未经授权维修服务点或人员对产品进行修理或改动的。
- 因不可抗力造成损坏的。
- 产品在使用过程中, 因意外、信号干扰或其他影响因素造成的无线连接丢失而不能正常工作。
- 正常磨损缺陷, 或自然损耗件。
- 产品因未在最初设计、制造或批准使用的国家/地区使用而无法正常工作, 进口产品可能会出现这种情况。

保修办法:

- 7天内出现质量问题, 根据国家“三包”规定于产品外观与包装完整的情况下将硬件退还给购买地点, 凭购买的有效凭证, 退回您所支付的硬件产品货款。
- 60天内出现产品质量问题, 您可以到购买地点更换硬件产品, 或者到指定的维修网点保修, 更换之后的硬件保质期保持剩余的天数。
- 1年内出现产品质量问题, 您可以到指定的维修网点保修。

产品质保卡

请填写下列信息, 并加盖销售单位公章

用户档案: _____年____月____日

用户名称			
通讯地址			
联系电话	邮 编		
购买地址			
购买价格	销售单号		
经销商签名	用户签名		

如需下载驱动, 请联系经销商索取!



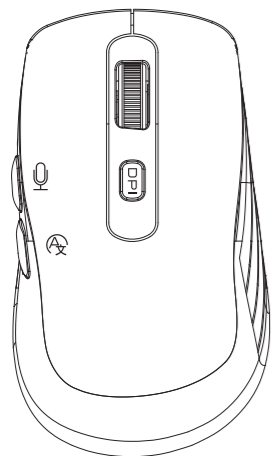
Made in China

A301

2.4G+BT Switch

Wireless+Bluetooth Dual-Mode Voice Mouse

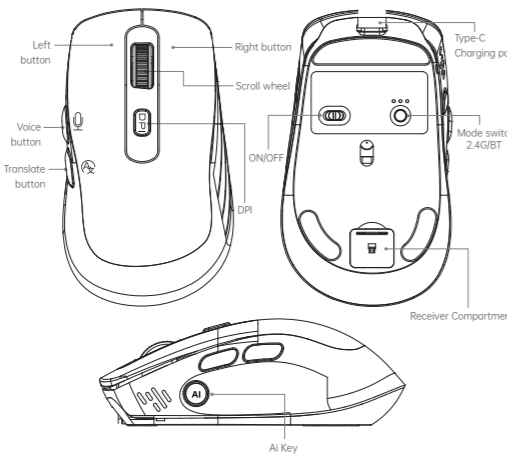
- BT
- BT Mode
- 2.4 GHz mode



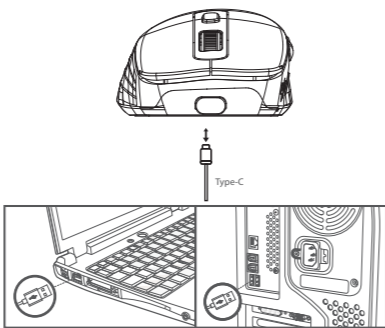
User Manual

Product Features

- DPI: 1200-1600-2400-3200 DPI [Default 1200 DPI]
- Number of buttons: 7
- Charging voltage: 5V
- Charging current: [Max] 250mA
- Charging port: Type-C
- Battery capacity: 500mAh
- Button lifespan: 5 million clicks
- Connection: 2.4G+Bluetooth
- Weight: 75g±5g
- Size: 114.5x66x40 mm
- System Support: Windows XP/Vista/7/8/10, Mac



Charging Instructions



Plug the Type-C end of the charging cable into the mouse and connect the USB end to your computer. This will start charging.

Charging Precautions

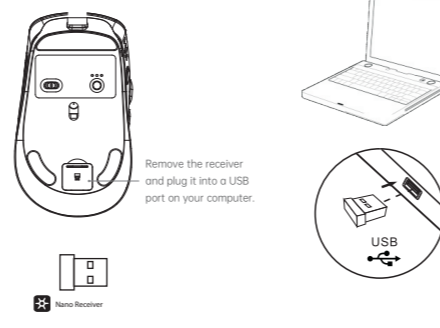
Charging Instructions

- We recommend charging the mouse using only a computer's USB port;
- Do not use a fast-charging phone charger to charge the mouse;
- Do not use low-quality, non-standard power adapters to charge the mouse;
- Do not use power adapters that exceed the specified voltage or current ratings to charge the mouse;
- Keep away from high-temperature equipment while charging;
- Turn off the power switch when the device will not be used for an extended period of time.

The charging instructions above also apply to other devices with charging capabilities.

Driver download link:
<http://overseas.cocheer.net/aiyc-international/index.html>
 Note:
 To download the driver, you must be in 2.4 GHz mode. Hold down the middle button for at least 5 seconds to automatically open the website.

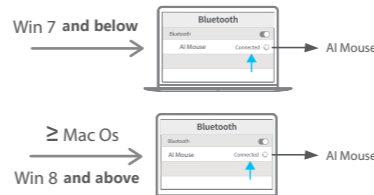
2.4 GHz connection



Remove the receiver and plug it into a USB port on your computer.

Press the mode switch button: a red light indicates 2.4G connection mode, a blue light indicates BT1, and a green light indicates BT2. In Bluetooth mode, press and hold the pairing button for 3 seconds; the indicator light will flash rapidly to enter Bluetooth pairing mode.

BT connection



- Slide the switch on the bottom of the mouse to the “ON” position to switch to Bluetooth mode.
- Press and hold the “Mode Switch” for 3 seconds until the indicator light flashes rapidly, indicating that the mouse is in pairing mode.
- Search for and select “AI Mouse” to connect and begin Bluetooth pairing. Once successful, the indicator light will turn off, and the mouse is ready for use.

Note: * Windows 7 and earlier versions are compatible with BT3.0, Does not support Bluetooth 5.0

Warranty Card Notes

Dear Customer:
 Within one year from the purchase date of the whole machine, for all hardware products in the product packaging, if there is a quality problem, the users who hold this warranty card are provided with free warranty service, and the rest of the warranty regulations are in accordance with the national “Microcomputer Commodity Repair and Replacement” Return Liability Regulations. At the same time, this service is limited to products with quality problems, and does not include compensation for the interests of buyers and any direct or indirect damages caused by other contingencies.

Products that fall under one of the following circumstances are not subject to the Three Guarantees:

- There is no valid three-guarantee certificate and valid invoice (except those that can prove that the product is within the validity period of the three-guarantee) or more than three-guarantee Expiry date or unauthorized alteration of the Three Guarantees certificate.
- The product model and serial number on the three-guarantee certificate do not match the actual product.
- The model number, serial number or date of manufacture code on the product has been altered, deleted or illegible.
- Defects are caused by excessive use beyond the intended use, such as nonstop use in a commercial environment.
- Damage caused by failure to use, maintain and store the product in accordance with the requirements of the product instruction manual.
- Damage caused by using pirated software or computer viruses during use.
- Unauthorized maintenance service points or personnel repair or modify the product.
- Damage caused by force majeure.
- During the use of the product, the wireless connection is lost due to accidents, signal interference or other influencing factors, normal work.
- Normal wear defects or natural wear parts.
- Products that do not work properly because they are not used in the country where they were originally designed, manufactured or approved for use, imported products This may happen.

Warranty Method:

- If there is a quality problem within 7 days, according to the national “Three Guarantees” regulations, the hardware will be replaced when the product appearance and packaging are complete. Return to the place of purchase, and return the amount of hardware products you paid for with the valid proof of purchase.
- If there is a product quality problem within 60 days, you can go to the place of purchase to replace the hardware product, or go to the designated maintenance Outlet warranty, the hardware warranty after replacement is the remaining days of the retention period.
- If there is a product quality problem within 1 year, you can go to the designated maintenance outlet for warranty.

Product Warranty Card

Please fill in the following information
 And stamped with the official seal of the sales unit

User Profile: _____ Year _____ Month _____ Day

User Name			
Mailing Address			
Phone	Post Code		
Purchase Address			
Purchase Price	Sales order number		
Dealer's Signature	User Signature		

* To download the driver, please contact the dealer for authorization



The contents of this card shall not be altered without authorization, and please save the product packaging box to safeguard your legal rights

Made in China